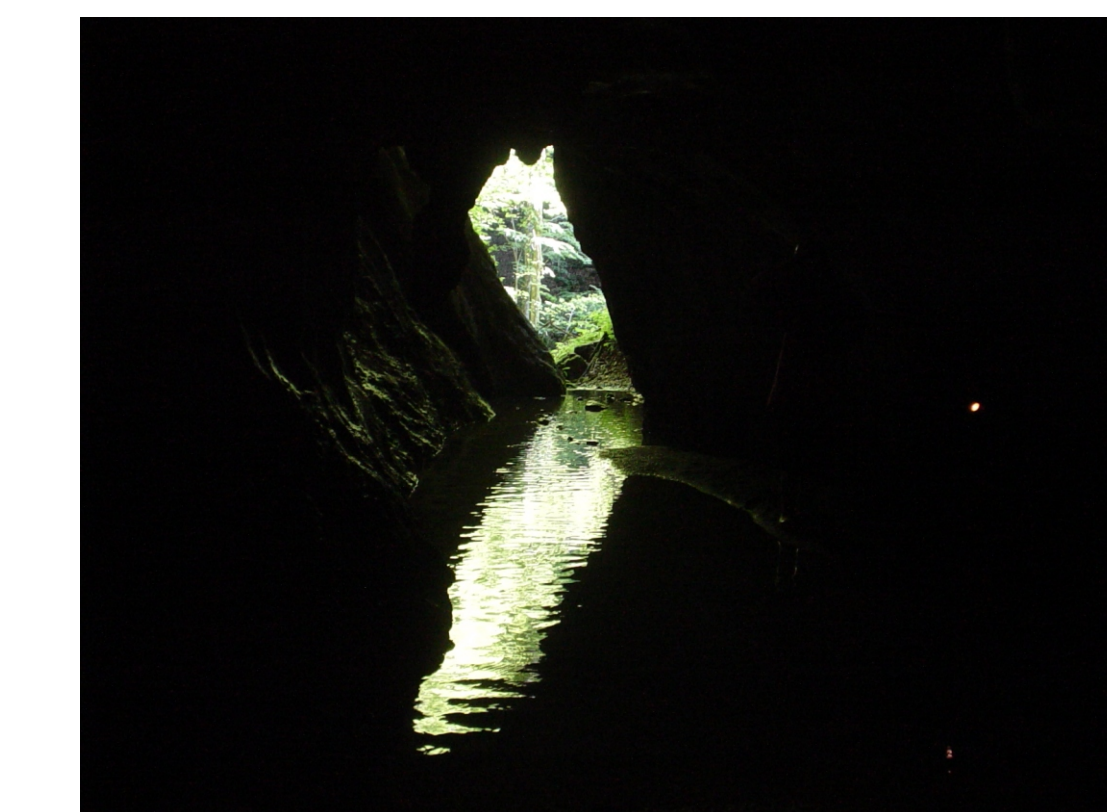
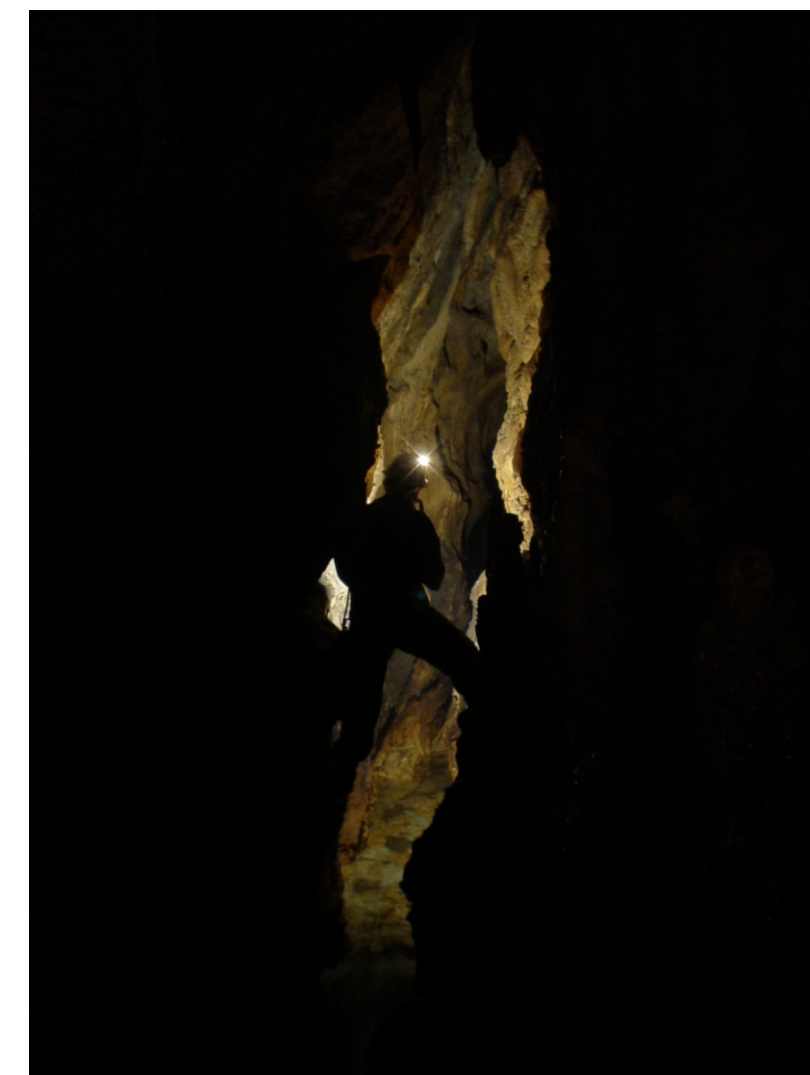
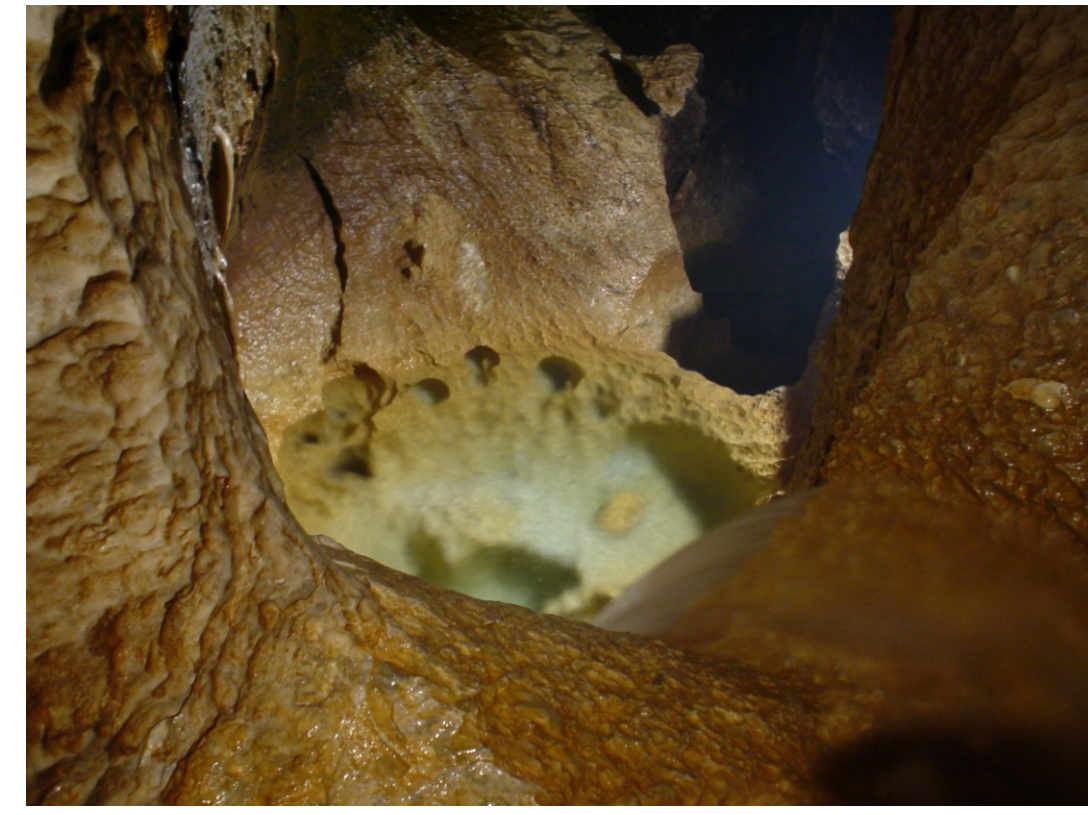
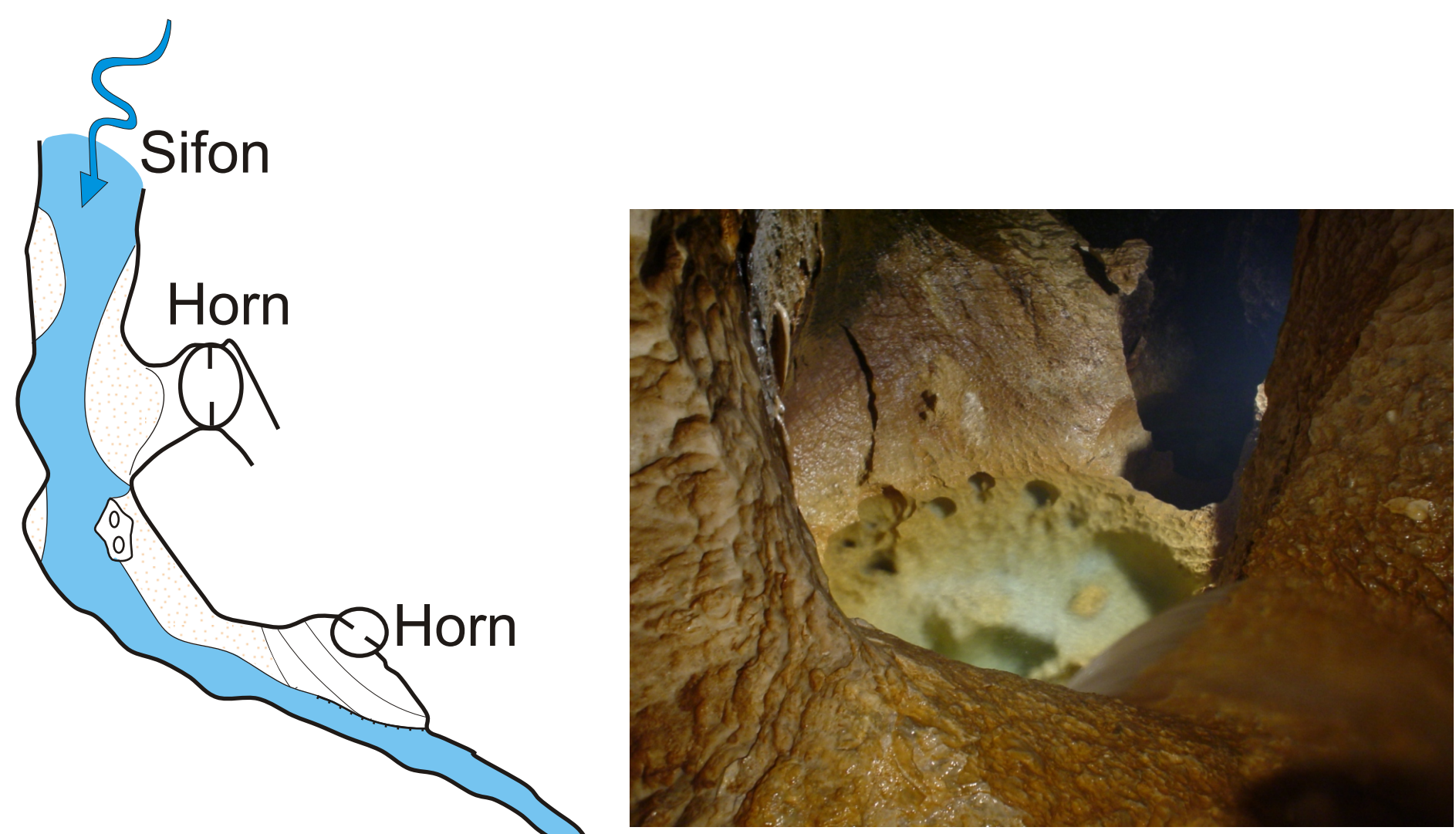


# Peștera Pișolca 3024/45

**N46 32 02.3 E22 35 26.4**

Dezvoltare: 264m  
Denivelare: +10m  
Extensie: 194m  
Altitudine absolută: 611m

Cartografiere: Rudolf ERMESZ (C.S. Liliacul Arad)  
Desen: Mihai BESESEK (A.S. Speowest Arad 2012)  
Fotografii: Romeo LAZĂR, Ion TOTOREAN,  
Mihai BESESEK, Bartek CHABALOWSKI



Gaura de șoarecă Sifon

Intrare

